



# Offices at Dartington Hall Estate

Dartington, Totnes, Devon, TQ9 6EL





# Offices at Dartington Hall Estate

Dartington, Totnes, Devon, TQ9 6EL

**Variety of Serviced Offices Opportunities in Prestigious Estate**  
**A Heritage Estate with Tranquil Surroundings Fostering Creativity & Productivity**  
**Flexible Office Spaces from 12m<sup>2</sup> (130 sq ft) to 50m<sup>2</sup> (536 sq ft)**  
**A Thriving Community with a Mixture of Other Professionals and Amenities**  
**Located Near Totnes with Excellent Transport Links and On-Site Parking**

## LOCATION

Dartington Hall is ideally situated near Totnes, with excellent transport links and access to a thriving community of businesses, creatives and professionals. Tenants benefit from the estate's tranquil surroundings, on-site amenities, and a supportive business environment.

## DESCRIPTION

Dartington Hall offers a unique opportunity to lease commercial space within a historic and vibrant estate. Set in a stunning rural location in Devon, the estate provides an inspiring setting for businesses seeking office, studio or workshop space. The available premises range in size and character, catering to a variety of business needs.

The estate offers a range of on-site amenities, including a welcoming café serving locally sourced food and drinks. Additionally, tenants benefit from access to beautiful gardens and walking trails, creating a peaceful and stimulating work environment. The estate also hosts cultural events, workshops and networking opportunities, enhancing the sense of community among businesses and professionals.

Ref No: 5181

Monthly Rentals From £106

Interested in this property?

T.01803 21 20 21 [bettesworths.co.uk](https://www.bettesworths.co.uk)





# Offices at Dartington Hall Estate

Dartington, Totnes, Devon, TQ9 6EL

The available spaces are arranged as: -

## **ATTIC ROOM, THE GRANARY**

Located in a modern serviced block, the Attic Room benefits from dormer windows that provide ample natural light. The clean, modern fit-out creates a pleasant and professional working environment, making it an ideal space for a small to medium-sized business. The office benefits from shared meeting rooms and kitchenette.

- Size: 536 sq ft.
- Rent: £5,252.80 per annum.
- Service Charge: £6,432.00 per annum.

## **ROOM 6, HIGHER CLOSE COMPLEX**

A versatile office space situated within the Higher Close Complex. The space is arranged as a three room suite with double doors, allowing it to be opened up into a larger working area or split apart for meetings or to create private work areas.

- Size: 452 sq ft.
- Rent: £4,429.60 per annum.
- Service Charge: £5,424.00 per annum.

## **ALBEMARLE ROOMS**

Compact office spaces suitable for independent professionals, start-ups or small businesses requiring affordable and flexible accommodation.

- Size: 130 sq ft per room.
- Rent: £106.17 per calendar month per room.
- Service Charge: £119.49 per calendar month per room.

## **PERRY ROOMS (AVAILABLE FROM OCTOBER 2025)**

Similar to the Albemarle Rooms, these spaces offer cost-effective office solutions for businesses looking to establish themselves within the Dartington Hall Estate.

- Size: 130 sq ft per room (24 available).
- Rent: £106.17 per calendar month per room.
- Service Charge: £119.49 per calendar month per room.

## **PARKING**

Annual parking permits are available to commercial tenants at a cost of £100.00 per annum (2025/26 rates).

## **TENURE**

Available by way of flexible short term lease agreements, with exact terms subject to negotiation.

## **BUSINESS RATES**

Tenant's will be responsible for their own business rates on their units. We believe all units will be able to claim 100% Small Business Rates Relief if the party is eligible (doesn't occupy more than one commercial premises). Interested parties are advised to contact Bettesworths with any questions on Business Rates and Rates Payable.

## **EPC**

EPC's can be provided on request.

## **VIEWING**

Viewing is highly recommended and can be arranged by prior appointment with the Agents, Bettesworths.

## **FURTHER INFORMATION**

Further details on the estate and amenities can be found via the Dartington Hall Estate website: [www.dartington.org](http://www.dartington.org).

Interested in this property?

T.01803 21 20 21 [bettesworths.co.uk](http://bettesworths.co.uk)





# Offices at Dartington Hall Estate

Dartington, Totnes, Devon, TQ9 6EL



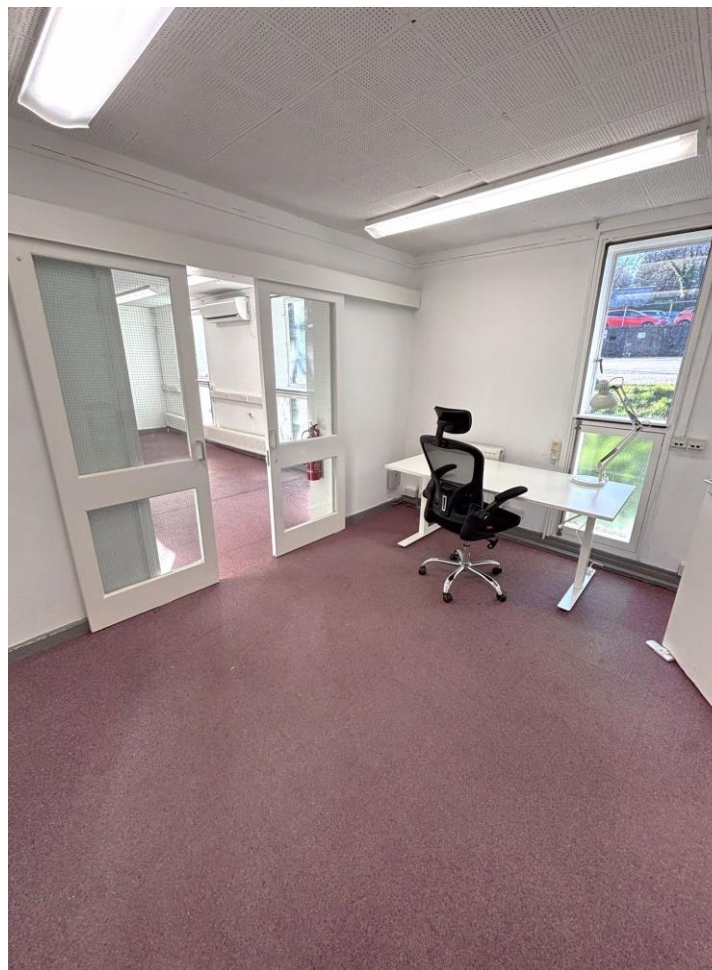
Interested in this property?  
T.01803 21 20 21 [bettesworths.co.uk](http://bettesworths.co.uk)





# Offices at Dartington Hall Estate

Dartington, Totnes, Devon, TQ9 6EL



Interested in this property?  
T.01803 21 20 21 [bettesworths.co.uk](http://bettesworths.co.uk)





# Offices at Dartington Hall Estate

Dartington, Totnes, Devon, TQ9 6EL



Interested in this property?  
T.01803 21 20 21 [bettesworths.co.uk](http://bettesworths.co.uk)





# Offices at Dartington Hall Estate

Dartington, Totnes, Devon, TQ9 6EL



[www.bettesworths.co.uk](http://www.bettesworths.co.uk)  
29/30 Fleet Street  
Torquay  
Devon  
TQ1 1BB



**IMPORTANT NOTE:** Messrs Bettesworths for themselves and for the vendors or lessors of this property whose agents they are give notice that: (i) the particulars are produced in good faith, are set out as a general guide only and do not constitute any part of a contract; (ii) no person in the employment of Messrs Bettesworths has any authority to make or give representation or warranty whatever in relation to this property. The fittings, equipment and services have not been tested by the agents.

Interested in this property?  
T.01803 21 20 21 [bettesworths.co.uk](http://bettesworths.co.uk)

